

Weatherby®



Weatherby, Inc.
Atascadero, CA 93422
(805) 466-1767

WEATHERBY SERVICE POLICY

Weatherby is a name that has been synonymous with quality firearms for over 50 years. All Weatherby® firearms are manufactured of the finest materials and have been thoroughly inspected and tested in every phase of production. Because of the confidence we have in our products, Weatherby does not provide a written warranty, but rather stands behind its reputation for customer service and satisfaction.

Simply stated, we will consider requests for service or repair of Weatherby® firearms on a case by case basis. A determination will be made taking into consideration such things as the age and condition of the firearm, and the circumstances surrounding its malfunction or other problem.

Weatherby, Inc. will not be responsible for defects resulting from ordinary wear and tear, alterations by unauthorized persons, accidents, misuse, use of incorrect or other than factory loaded ammunition, or failure to provide reasonable and normal maintenance. Cracked or broken stocks will not be replaced, repaired or otherwise adjusted unless the crack or break is a direct result of a related factory defect.

Should any Weatherby® firearm require service or repair under this service policy, it must be delivered transportation prepaid to a Weatherby Authorized Service Center (names and addresses of which can be supplied by Weatherby upon request). The product must be accompanied by a proof of purchase and a letter explaining the problem. It should also be insured by the owner at the time of shipment, as Weatherby, Inc. can accept no responsibility for damage or loss in transit. Weatherby will pay all charges to return the product to the owner if it is accepted for service or repair under the provisions of this service policy. Weatherby, Inc. also reserves the right to repair or replace any product at our sole discretion.

WEATHERBY, INC. SHALL NOT BE LIABLE FOR ANY CONSEQUENTIAL, INCIDENTAL OR CONTINGENT DAMAGES.

- SAFETY - FIRST AND FOREMOST

FIREARMS ARE DANGEROUS WEAPONS, WHICH CAN CAUSE SERIOUS INJURY OR DEATH. WHEN USING ANY FIREARM, SAFETY MUST BE YOUR FIRST AND CONSTANT CONCERN.

READ AND UNDERSTAND THE FOLLOWING SAFETY RULES

KNOW YOUR FIREARM. Before assembling or using your Weatherby® SAS semi-automatic shotgun, read and understand the instructions and safety warnings contained in this Owner's Manual in order to learn how to use the firearm safely and correctly.

ALWAYS TREAT YOUR FIREARM AS IF IT WERE LOADED. Use the manual safety button as outlined in this manual. Never move the safety to "FIRE" until YOU are ready to fire.

KEEP THE MUZZLE POINTED IN A SAFE DIRECTION. The safe direction may be "up" on some occasions and "down" on others. Never point the muzzle toward anything not intended as a target.

USE ONLY THE CORRECT AMMUNITION FOR YOUR FIREARM. Be sure to use only the correct gauge and length ammunition for your Weatherby® SAS shotgun as stamped on the left side of the barrel.

ALWAYS UNLOAD YOUR FIREARM WHEN NOT SHOOTING. Never transport or store a loaded firearm in a vehicle or building. Unload your firearm before climbing a fence or obstruction, or entering a slippery area.

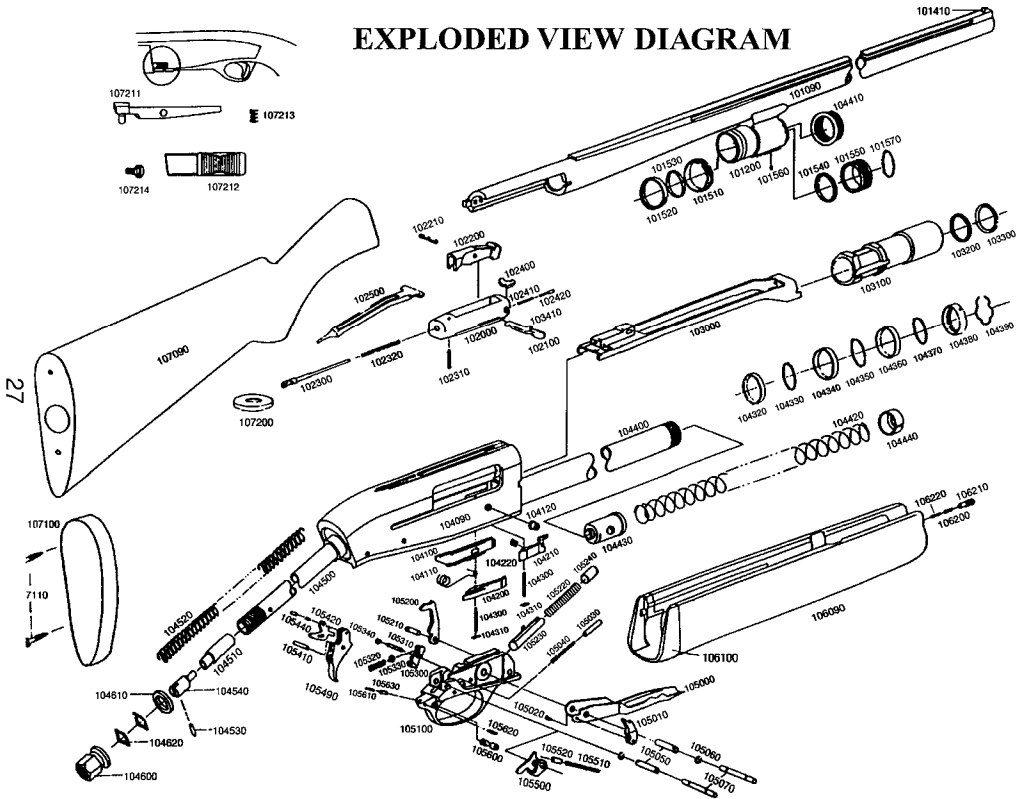
MAINTAIN YOUR FIREARM! Keep the barrels clean and free of obstructions. Clean your firearm regularly and have it inspected periodically to make sure it is mechanically correct and functioning properly. Worn or damaged parts can be dangerous.

DO NOT MAKE ADJUSTMENTS. Never make changes or alterations to your firearm. Use only Weatherby® parts. Do not make any adjustments to the trigger, or change the shape or size of the sear or other parts. Repair should be performed by a Weatherby® Authorized Service Center.

MAKE YOURSELF SAFE. Always wear shooting glasses. When target shooting or plinking, use ear protection also. If your firearm is equipped with a muzzle brake or is "ported", wear ear protection at all times. Never drink alcoholic beverages before or during shooting.

REMEMBER - FIREARMS SAFETY DEPENDS ON YOU!!

EXPLODED VIEW DIAGRAM



- Cleaning Your Weatherby® SAS Shotgun, continued Page 23
 - Cleaning the Bolt Page 23
 - Cleaning the Slide and Carrier Page 23
 - Cleaning the Magazine Page 24
 - Cleaning the Trigger Assembly Page 24
 - Cleaning the Piston Page 24
 - Cleaning the Forearm Page 24
 - Cleaning the Buttstock Page 24
 - Rust Prevention and Repair Page 24
- Assembly of Weatherby® SAS Shotgun Page 25
- Storing Your Shotgun Page 26
- Suggestions for Getting Top Performance from Your Weatherby® SAS semi-automatic shotguns Page 26
- Exploded View Diagram Page 27
- Parts Listing Page 28
- Weatherby® Service Policy Page 29
- Ten Commandments of Firearms Safety Page 30
- Exercise Extreme Caution Page 30

ASSEMBLY OF WEATHERBY® SAS SHOTGUN

ASSEMBLY OF LINK TO RECEIVER

1. With the shotgun upside down, slide the link along the receiver rails towards the buttstock until the end of the link enters into the action spring tube. Ensure the part is oriented as per Fig. 14.

Fig. 14



ASSEMBLY OF BOLT TO RECEIVER

1. Assemble the bolt onto the bolt carrier with the piston attached.
2. With the receiver right side up, slide the piston over the magazine tube, lifting the carrier allowing the carrier to slide into the receiver rails until the carrier contacts the link. See Fig. 14.
3. Align the bolt slot with the carrier slot then insert the operating handle (refer to Fig. 13, page 20).

ASSEMBLY OF TRIGGER ASSEMBLY TO RECEIVER

1. Using the operating handle, retract the bolt about one inch to the rear.
2. With the bolt rearward one inch, insert the trigger assembly into the receiver until the two trigger plate pin holes are aligned between the trigger assembly and the receiver (refer to Fig. 12, page 19).
3. Release the bolt to the forward position.
4. Press the two trigger plate pins into the receiver until flush with the receiver side.

ASSEMBLY OF BARREL TO RECEIVER

Assembly of barrel as described under ASSEMBLING BARREL TO RECEIVER, (page 11).

ASSEMBLY OF FOREARM TO RECEIVER

Assembly of forearm as described under ASSEMBLING FOREARM TO RECEIVER ASSEMBLY, (page 13).

MANUAL SAFETY OPERATION

The manual safety on Weatherby® SAS semi-automatic shotguns is a button-type safety located on the rear of the trigger guard. When in proper condition and correctly engaged in the "SAFE" position, the manual safety blocks the trigger and prevents accidental discharge under normal usage.

WARNING!!

Never depend on any mechanical safety mechanism or device to prevent the dangers of careless handling or pointing a firearm in an unsafe direction.

When manipulating the manual safety, keep all fingers outside the trigger guard. The shotgun will fire if the trigger is pulled when the safety is not in the "SAFE" position.

The safety should always be in the "SAFE" position except when the shotgun is intended to be fired.

The manual safety can be moved between the "SAFE" and "FIRE" positions at any time, regardless of whether the shotgun is loaded or cocked. *To minimize the possibility of accidental discharge, it is strongly recommended that the safety always be placed in the "SAFE" position except when the shotgun is intended to be fired.*

To engage the manual safety, push the safety button from left to right with your thumb until it stops and stays in place in the "SAFE" position.

To disengage the manual safety, push the safety button through the trigger guard from right to left with your thumb until it stops and stays in place in the "FIRE" position (a red mark will be visible around the base of the safety button on the left side of the trigger.) Fig. 2.

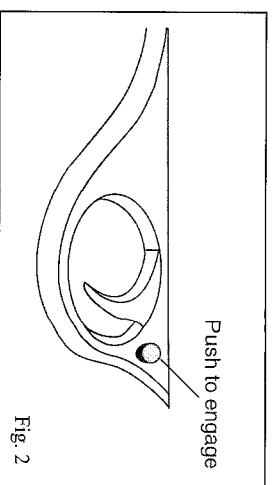


Fig. 2

5. Insert a patch saturated with gun lubricant into the cleaning rod tip and push it through the choke tube. Remove the patch and withdraw the rod.
6. Insert a dry, clean patch into the cleaning rod tip and push it through the choke tube to remove excess lubricant. Remove the patch and withdraw the rod.
7. Using a patch or clean cloth saturated with cleaning solvent, wipe down the outside surfaces of the choke tube. (A clean toothbrush may be handy for cleaning the threads.)
8. With a clean, dry lint-free cloth, remove all cleaning solvent.
9. Using a patch or clean cloth, apply a light coat of gun lubricant to the outside surfaces of the choke tube, being careful to remove any excess lubricant.

CLEANING THE RECEIVER

1. Using a small lint-free cloth, clean the inside and outside of the receiver with gun-cleaning solvent; and dry thoroughly with a clean cloth.
2. With a clean cloth or patch, apply a light coat of gun lubricant to all accessible surfaces of the receiver.

NOTE: DO NOT LEAVE AN EXCESSIVE AMOUNT OF OIL ON ANY PARTS, ESPECIALLY THE BREACH SURFACE OF THE RECEIVER. CHECK THE CHAMBERS TO MAKE SURE THEY ARE FREE OF OIL.

CLEANING THE BOLT

1. Using a small lint-free cloth, clean the inside and outside of the bolt assembly with gun-cleaning solvent; and dry thoroughly with a clean cloth. (A clean toothbrush may be handy for cleaning the recesses of the bolt).
2. With a clean cloth or patch, apply a light coat of gun lubricant to all accessible surfaces of the bolt.

CLEANING THE SLIDE AND CARRIER

1. Using a small lint-free cloth, clean the inside and outside of the slide and carrier with gun-cleaning solvent; and dry thoroughly with a clean cloth. (A clean toothbrush may be handy for cleaning some the areas of the slide and carrier).
2. With a clean cloth or patch, apply a light coat of gun lubricant to all accessible surfaces of the slide and carrier.

23

MAGAZINE CUT-OFF SYSTEM

The magazine cut-off system prevents shells from feeding out of the magazine and being cycled into the chamber, making it simple to single-load the chamber directly through the loading port or to keep the chamber empty without having to unload the magazine.

The cut-off device is located on the lower left side of the receiver (refer to Fig. 3.) Simply slide the device to the "ON" position to prevent a shell from the magazine from feeding to the chamber, or to the "OFF" position to permit feeding of shells from the magazine.

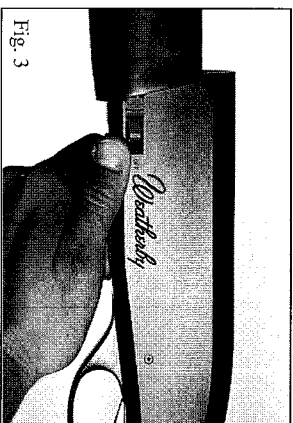


Fig. 3

Set the magazine cut-off device to the "ON" position by sliding the switch rearward. After each shot with the magazine cut-off "ON", the bolt will be held to the rear, permitting another shell to be single-loaded directly into the chamber through the loading port (refer to *Loading the Shotgun*, page 15). With no shell in the loading port, the bolt may be closed (refer to *Closing the Breach*, page 15) without a shell being fed into the chamber.

Set the magazine cut-off device to the "OFF" position by sliding the switch forward. If any shells are present in the magazine a new shell will be fed into the chamber each time the bolt closes until the magazine is empty.

CAUTION: Moving the magazine cut-off device from the "ON" position to the "OFF" position with a shell in loading port of receiver will cause double feeding and jam the action of the shotgun.

8

CLEANING YOUR WEATHERBY® SAS SHOTGUN

Any firearm requires regular cleaning and periodic maintenance. To assure safe and reliable function of your Weatherby® SAS shotgun, it is very important that you clean it immediately after each use. Periodically during extended storage periods, remove powder residue, dirt, dust and excess lubricant to prevent rust. During cleaning, inspect components to determine whether they are in proper working order.

A basic cleaning kit consists of a proper-sized cleaning rod, bore brush(es) of proper size and patches; gun cleaning solvent; gun lubricant; and lint-free cloths. The cleaning rod must have a tip with a slot into which patches can be inserted. Additionally, tooth brushes, cotton swabs and pipe cleaners are very handy tools for cleaning away dirt in hard to reach places.

To properly clean your shotgun, it must first be disassembled (*refer to Disassembly Instructions, page 19*), the parts and components cleaned as discussed below, then reassembled (*refer to Assembly Instructions, page 25*).

CAUTION: *Apply solvents and lubricants properly and sparingly. Do not spray or apply directly on ammunition. Solvents and lubricants may affect the propellant, causing it not to ignite, but the energy from the primer may be sufficient to propel the propellant, wad and shot column into the bore of the barrel, causing an obstruction, and resulting in damage to the shotgun and serious injury to the shooter and bystanders upon firing a subsequent shot shell.*

CLEANING THE BORE

1. Remove the choke tube (*refer to Removing the Choke Tubes, page 9*).
2. With a bore cleaning brush of the proper size attached to the cleaning rod, apply gun cleaning solvent to the brush.
3. Push the brush all the way through the barrel bore several times from the chamber end.
4. Insert the brush into the muzzle of the barrel only far enough to encounter the threads for the choke tube, and twist it several times.
5. With a clean patch inserted in the tip attached to the cleaning rod, push the rod all the way through the barrel bore from the chamber end until the cloth emerges from the muzzle. Remove the dirty patch and withdraw the rod.
6. Repeat step 4 as many times as needed until the patch is clean as it emerges from the muzzle.

When installing a choke tube into a barrel assembled to the shotgun, keep the muzzle of the shotgun pointed in a safe direction and your fingers out of the trigger guard and away from the trigger at all times.

1. Move the manual safety button to the "SAFE" position (*refer to Manual Safety Operation, page 6*), before installing a choke tube into a barrel assembled to a shotgun.
2. Unload the shotgun (*refer to Unloading the Shotgun, page 18*).
3. Insert the threaded end of the choke tube into the muzzle of the barrel, and screw it into the barrel as far as possible with your fingers, turning it in a clockwise direction.
4. Insert the end of the choke tube wrench marked for the gauge of your shotgun into the notches in the muzzle end of the choke tube, and continue turning clockwise until the choke tube is seated, tightening snugly.

CAUTION: *To prevent damage to barrel or choke tube threads, do not over-tighten.*

TIGHTENING CHOKE TUBES

Choke tubes may loosen with repeated recoil, which may result in changes in point of impact or damage to choke tube or barrel threads with extended use. Check and tighten choke tubes frequently — before, after and during shooting — as follows:

Keep the muzzle of the shotgun pointed in a safe direction and your fingers out of the trigger guard and away from the trigger at all times.

1. Move the manual safety button to the "SAFE" position (*refer to Manual Safety Operation, page 6*).
2. Unload the shotgun (*refer to Unloading the Shotgun, page 18*).
3. Insert the end of the choke tube wrench marked for the gauge of your shotgun into the notches in muzzle end of choke tube, and tighten the choke tube snugly, turning clockwise.

CAUTION: *To prevent damage to barrel or choke tube threads, do not over-tighten.*

WARNING! *Loose choke tubes may cause bore obstructions due to "shaving" shot or preventing a wad from exiting the muzzle, which could result in injury or death to the shooter or bystanders and damage to the shotgun. Tighten choke tubes frequently — before, during and after shooting.*

DISASSEMBLY INSTRUCTIONS

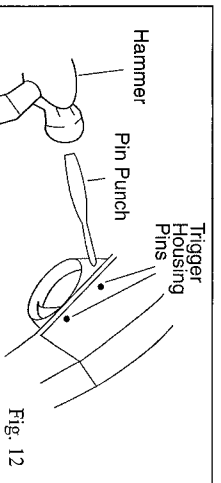
DISASSEMBLY OF BARREL FROM RECEIVER

Keep the muzzle of the shotgun pointed in a safe direction and your fingers out of the trigger guard and away from the trigger at all times.

1. Unload the shotgun (*refer to Unloading the Shotgun, page 18*).
2. Close the bolt by depressing the bolt release button.
3. Unscrew the magazine cap by turning it in a counter clockwise direction until easily detached.
4. Remove the forearm by sliding it forward (towards the muzzle), until clear of the magazine tube.
5. Remove the barrel by grasping firmly and pushing forward until it is clear of the receiver ring.

DISASSEMBLY OF TRIGGER ASSEMBLY FROM RECEIVER

1. If installed, remove forearm and barrel referring to Disassembly of Barrel from Receiver, above.
2. Move the manual safety button to the "SAFE" position (*refer to Manual Safety Operation, page 6*).
3. With a hammer and punch push the trigger plate pins through the receiver until they are all the way out of the receiver (Fig. 12).



4. Using one or two fingers pull the trigger assembly straight out from the receiver.

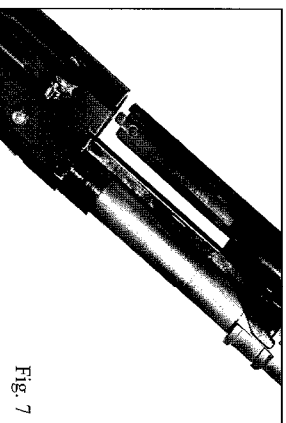
3. With one hand, grasp the receiver and buttstock assembly in the upright position. Slide the bolt forward with your thumb pushing on the rear outer surface of the bolt until it protrudes slightly from the receiver.

CAUTION: To avoid injury, keep hands and fingers outside of the receiver at all times.

4. With the other hand, grasp the barrel at least 6" above the barrel ring.

CAUTION: To avoid injury, keep hands and fingers away from the barrel ring while assembling the barrel to the receiver assembly.

5. Referring to Fig. 7, align the barrel shank on the chamber end of the barrel with the receiver ring and the barrel ring with the magazine tube.



6. Insert the barrel into the receiver, using the barrel ring and magazine as a guide. Rotate the barrel slightly right and left until gravity allows the barrel to slip into place (rib is flush with the receiver and the magazine tube is protruding through the barrel ring). Do not force the barrel into the receiver.

7. Assemble the forearm to the receiver assembly (*refer to Assembling Forearm to Receiver Assembly, page 11*).

CAUTION: This is a precision fit. If binding is felt, stop and try again.

WARNING!! If ammunition is present in the barrel's chamber, the receiver or the magazine, the shotgun will be loaded, cocked and ready to fire by releasing the bolt and pulling the trigger with the safety "OFF".

2. Set the magazine cut-off device to the "OFF" position (*refer to Magazine Cut-off Device, page 8*).
3. Twisting the shotgun slightly to the left, open the bolt (*refer to Opening the Breech, page 14*) to permit feeding of a shell from the magazine into the receiver loading port.
4. Close the bolt (*refer to Closing the Breech, page 15*).

WARNING!! If the manual safety is not in the "SAFE" position, the shotgun is now ready to fire. Do not touch the trigger until YOU are ready to fire.

To Single-Load the Chamber (with or without shells in the magazine):

Keep the muzzle of the shotgun pointed in a safe direction and your fingers out of the trigger guard and away from the trigger at all times.

1. Move the manual safety button to the "SAFE" position (*refer to Manual Safety Operation, page 6*).
2. Set the magazine cut-off device to the "ON" position (*refer to Magazine Cut-off Device, page 8*).
3. Open the bolt (*refer to Opening the Breech, page 14*).
1. Place a shot shell of the proper size (*refer to Ammunition, page 7*) and load directly into the receiver loading port, with the crimped end of the shell pointing toward the muzzle of the shotgun.
5. Close the bolt (*refer to Closing the Breech, page 15*).

WARNING!! If the manual safety is not in the "SAFE" position, the shotgun is now ready to fire. Do not touch the trigger until YOU are ready to fire.

FIRING THE SHOTGUN

Pulling the trigger fires the shotgun when a shot shell is loaded in the chamber.

1. With a shot shell in the chamber of the barrel, and keeping the muzzle of the shotgun pointed in a safe direction and your fingers out of the trigger guard and away from the trigger, move the manual safety button forward to the "FIRE" position (*refer to Manual Safety Operation, page 6*).
2. Hold the recoil pad snugly to your shoulder and carefully point the muzzle of the shotgun at your intended target.

OPERATING INSTRUCTIONS

OPENING THE BREECH

Keep the muzzle of the shotgun pointed in a safe direction, and your fingers out of the trigger guard and away from the trigger at all times.

1. Move the manual safety button to the "SAFE" position (*refer to Manual Safety Operation, page 6*).
2. Unload the gun (*refer to Unloading the Shotgun, page 18*).
3. Rest the butt pad against your thigh while grasping the shotgun forearm firmly with one hand.
4. With the other hand grasp the operating handle pulling rearward until the bolt locks into the rearward position (Refer to Fig. 8).

CHECKING FOR AND CLEARING BORE OBSTRUCTIONS

The barrel of your shotgun should always be checked for obstructions before loading and **immediately** following any occurrence in the field which might result in mud, dirt or other debris entering the bore.

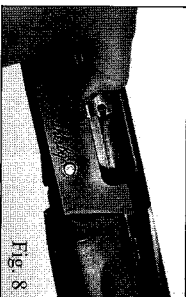


Fig. 8

WARNING!! Never attempt to check for or clear a bore obstruction by loading a shot shell into the chamber of the barrel and firing! If there is a bore obstruction this will cause excessive pressures which may result in damage to your shotgun, death or serious injury.

To check the barrel for obstructions:

Keep the muzzle of the shotgun pointed in a safe direction and your fingers out of the trigger guard and away from the trigger at all times.

1. Move the manual safety button to the "SAFE" position (*refer to Manual Safety Operation, page 6*).
2. Unload the gun (*refer to Unloading the Shotgun, page 18*).
3. Disassemble the barrel from the receiver (*refer to Disassembly of Barrel from Receiver, page 10*).